

**Foil Ducting
Boxed**



UL 2158A Approved for Dryers

- 35-17425-5 4" x 25'
- 35-17450-5 4" x 50'

UL 181

- 35-17425 4" x 25'
- 35-17450 4" x 50'
- 35-17525 5" x 25'
- 35-17625 6" x 25'
- 35-17725 7" x 25'
- 35-17825 8" x 25'

**Foil Ducting
Kits w/ 2 Clamps**



Photo Photo
Forthcoming Forthcoming

UL 2158A Approved for Dryers

- | | | Clamp
Type |
|------------|---------|---------------|
| 35-133-5FS | 4" x 3' | Spring |
| 35-135-5FS | 4" x 5' | Spring |
| 35-138-5FS | 4" x 8' | Spring |
| 35-125-5FS | 4" x 5' | Screw |
| 35-125-8FS | 4" x 8' | Screw |
| 35-115-5FS | 4" x 5' | Worm Gear |

**Foil Ducting
Pre-Cut**

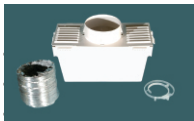


UL 2158A Approved for Dryers

- 35-103-5F 4" x 3'
- 35-105-5F 4" x 5'
- 35-108-5F 4" x 8'

Vent Bucket

35-860F



10 1/2" x 4 3/4" Bucket
w/ 5ft Foil Ducting & Plastic Clamps

Dryer Duct Clamps



- 35-01 Spring
- 35-02 Screw
- 50-964 Worm Gear

**Rigiflex
Dryer Transition Duct**

UL 2158A Approved for Dryers

Photo
Forthcoming

- no Fittings
- 35-RG145 4" x 5'
 - 35-RG148 4" x 8'

Photo
Forthcoming

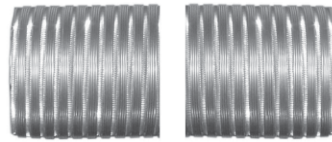
with Fittings
No Tools, Clamps, or Ties Required

- 35-RG145WE 4" x 5'
- 35-RG148WE 4" x 8'

Corrugated Aluminum

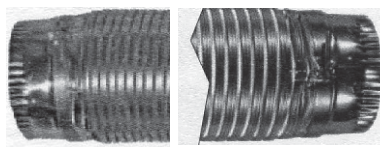
UL 2158A Approved for Dryers

Plain Ends



35-110804 4" x 8'

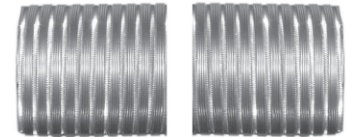
Snap Lock Ends



35-110548 4" x 6' w/ Screw Clamps

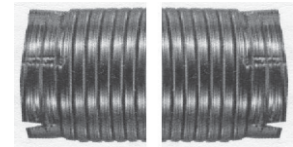
Corrugated Aluminum

Plain Ends



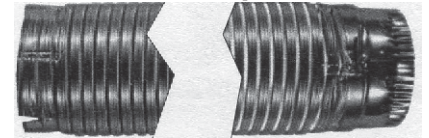
- 35-18043/9 4" x 3'
- 35-18045/9 4" x 5'
- 35-18048/9 4" x 8'
- 35-18058/5 5" x 8'
- 35-18068/4 6" x 8'
- 35-18078/4 7" x 8'
- 35-18088/4 8" x 8'

Soft Cuff Ends



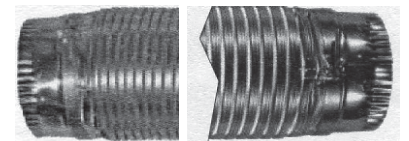
- 35-10088 4" x 4'
- 35-10090 4" x 6'
- 35-10091 4" x 8'

Soft Cuff & Snap Lock Ends



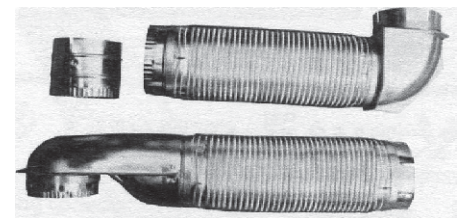
35-110160 4" x 2' w/ Screw Clamp

Snap Lock Ends



35-10107 4" x 6' w/ Screw Clamp

Installers Kit



35-10095

- 4" x 4' Pipe w/ Close Elbow
- 4" x 4' Pipe w/ Wall Elbow
- 4" Extension Collar
- 2ea. Screw Clamps

**Don't see your part?
Call your Sales Rep
@ 800-242-7769
for other options.**

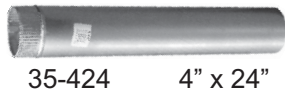
4" Vent Adapters



- | | |
|-----------|---------------------|
| 35-10103 | Extension Collar |
| 35-10108 | Elbow, Close |
| 35-10109 | Elbow, Wall Offset |
| 35-10110 | Elbow, Dryer Offset |
| 35-10137 | Coupling |
| 35-111245 | Oval to Round |
| 35-244 | Connector |
| 35-AMDOC | Offset |

Vent Pipe - Snaplock

Aluminum



35-424 4" x 24"

Galvanized



- | | |
|--------|----------|
| 35-404 | 4" x 30" |
| 35-414 | 4" x 36" |
| 35-415 | 5" x 36" |
| 35-416 | 6" x 36" |
| 35-417 | 7" x 36" |
| 35-418 | 8" x 36" |

Adjustable Elbows

Aluminum



- | | |
|--------|----|
| 35-314 | 4" |
| 35-316 | 6" |
| 35-317 | 7" |

Galvanized



- | | |
|--------|----|
| 35-303 | 3" |
| 35-304 | 4" |
| 35-305 | 5" |
| 35-306 | 6" |
| 35-307 | 7" |
| 35-308 | 8" |

Reducers - Increases

Galvanized Reducer

- | | |
|--------|----------|
| 35-343 | 4" to 3" |
| 35-354 | 5" to 4" |
| 35-364 | 6" to 4" |
| 35-365 | 6" to 5" |
| 35-375 | 7" to 5" |
| 35-376 | 7" to 6" |
| 35-387 | 8" to 7" |

Galvanized Increaser

- | | |
|--------|----------|
| 35-434 | 3" to 4" |
| 35-445 | 4" to 5" |
| 35-456 | 5" to 6" |
| 35-457 | 5" to 7" |
| 35-467 | 6" to 7" |
| 35-478 | 7" to 8" |

Transition Adapters



- | | | | |
|-----------|---------------|---------------|-----------------|
| | 35-505 | 35-595 | 35-CB610 |
| Straight | 35-505 | 35-506 | 35-507 |
| | 35-508 | 35-595 | 35-596 |
| 90° Angle | 35-595 | 35-596 | 35-CB610 |
| Cone Boot | 35-CB610 | | |

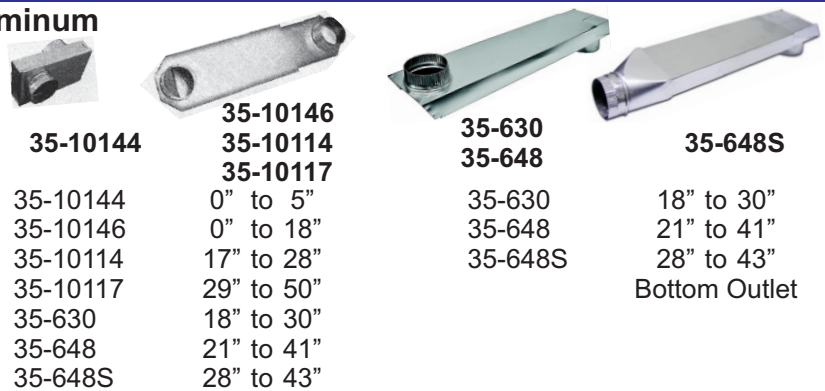
Transition Pipe Extensions & Angles



- | | | | |
|-----------|---------------|---------------|---------------|
| | 35-550 | 35-555 | 35-557 |
| Extension | 35-550 | 35-560 | 35-555 |
| | 35-560 | 35-557 | 35-557 |
| Elbow | 35-555 | 35-557 | 35-557 |

Telescoping Vent

Aluminum



- | | | | |
|-----------------|-----------------|---------------|----------------|
| 35-10144 | 35-10146 | 35-630 | 35-648S |
| | 35-10114 | 35-648 | |
| | 35-10117 | | |
| 35-10144 | 0" to 5" | 35-630 | 18" to 30" |
| 35-10146 | 0" to 18" | 35-648 | 21" to 41" |
| 35-10114 | 17" to 28" | 35-648S | 28" to 43" |
| 35-10117 | 29" to 50" | | Bottom Outlet |
| 35-630 | 18" to 30" | | |
| 35-648 | 21" to 41" | | |
| 35-648S | 28" to 43" | | |

Vent Hoods



- | | | | | |
|--------------------------|--------------------------|--------------------------|----------------------------|------------------|
| Photo Forthcoming | Photo Forthcoming | Photo Forthcoming | | |
| 35-800 | 35-812 | 35-844 | 35-897 | 35-GVHXW4 |
| Aluminum | Plastic | Plastic | Aluminum | Plastic |
| 35-800 | 4" Regular | 35-895 | 5" w/ Spring Loaded Damper | |
| 35-802 | 4" Big Mouth | 35-896 | 5" w/ Spring Loaded Damper | |
| 35-810 | 4" Regular | 35-897 | 5" w/ Spring Loaded Damper | |
| 35-812 | 4" Big Mouth | 35-898 | 5" w/ Spring Loaded Damper | |
| 35-844 | 4" w/ Dampers | 35-GVHXW4 | 4" w/ Dampers | |
| 35-845 | 5" w/ Dampers | | | |
| 35-846 | 6" w/ Dampers | | | |